

Communication

Contacts

Use this application to manage contacts, including phone numbers, email addresses, and others.




Tap **Contacts** on the Applications screen.

Managing contacts

Tap **Contacts**.

Creating a contact

Tap  and enter contact information.

-  : Add an image.
-  /  : Add or delete a contact field.

Editing a contact

Select a contact to edit, and then Tap .

Deleting a contact

Select a contact to delete, and then Tap .




Searching for contacts

Tap **Contacts**.

Use one of the following search methods:

- Scroll up or down the contacts list.
- Use the index at the left side of the contacts list for quick scrolling, by Dragging a finger along it.
- Tap the search field at the top of the contacts list and enter search criteria.


Once a contact is selected, take one of the following actions:

-  : Add to favorite contacts.
-  : Create a message.
-  : Create an email.

Displaying contacts

Tap **Contacts**.

By default, the device shows all saved contacts.

Tap  → **Settings** → **Contacts to display**, and then change a location where contacts are saved.

Moving contacts


Tap **Contacts**.

Moving contacts to Google

Tap  → **Merge accounts** → **Merge with Google**.

Contacts moved to Google Contacts appear with  in the contacts list.

Moving contacts to Samsung

Tap  → **Merge accounts** → **Merge with Samsung**.

Contacts moved to Samsung Contacts appear with  in the contacts list.

Importing and exporting contacts

Tap **Contacts**.


Importing contacts

Tap  → **Settings** → **Import/Export**, and then select an import option.

Exporting contacts

Tap  → **Settings** → **Import/Export**, and then select an export option.

Sharing contacts

Tap  → **Share contact via** → **Multiple contacts**, select contacts, Tap **Done**, and then select a sharing method.

Favorite contacts

Tap **Favorites**.

Tap , select a contact you would like to add to your favorites, and Tap **Done**.


Tap , and then take one of the following actions:

- **Search:** Search for contacts.
- **Remove from Favorites:** Delete contacts from favorites.
- **List view / Grid view:** View contacts in grid or list form.
- **Help:** Access help information about using contacts.


Contact groups

Tap **Groups**.

Creating a group


Tap , set details for the group, add contacts, and then Tap **Save**.

Adding contacts to a group

Select a group, and then Tap  → **Add member**. Select contacts to add, and then Tap **Done**.

Managing groups

Select a group, Tap , and then perform one of the following actions:

- **Search:** Search for contacts.
- **Delete groups:** Select user-added groups, and then Tap **Done**. Default groups cannot be deleted.
- **Edit group:** Change the group settings.
- **Add member:** Add members to the group.
- **Remove from group:** Delete members from the group.
- **Send message:** Send a message to a group's members.
- **Send email:** Send an email to a group's members.
- **Change order:** Touch & Hold  next to the group name, Drag it up or down to another position, and then Tap **Done**.
- **Help:** Access help information about using contacts.


Sending a message or email to a group's members

Select a group, Tap  → **Send message** or **Send email**, select members, and then Tap **Done**.

Business card

Create a business card and send it to others.

Tap **Contacts**.

Tap **ME**, enter details, such as phone number, email address, and postal address, and then Tap **Save**. If user information has been saved when you set up the device, select the business card, and then Tap  to edit.

Tap  → **Share contact via** → **Selected contact**, and then select a sharing method.

SoftBank Mail

Use this application to send S! Mail multimedia messages (MMS) or text message (SMS).

Tap **Mail** on the Applications list.



See the SoftBank Website for details about SoftBank Mail features.

Initializing this application

When **Mail** is run for the first time, you need to set up the application to send and receive S! Mail when using Wi-Fi.

On the Applications list, **Mail** → **Set Now**.

Sending messages

Tap **Mail**, enter recipients, subject, and a message, and then Tap **Send**.

 : Add recipients to the Cc: and/or Bcc: fields, and/or save as a draft.

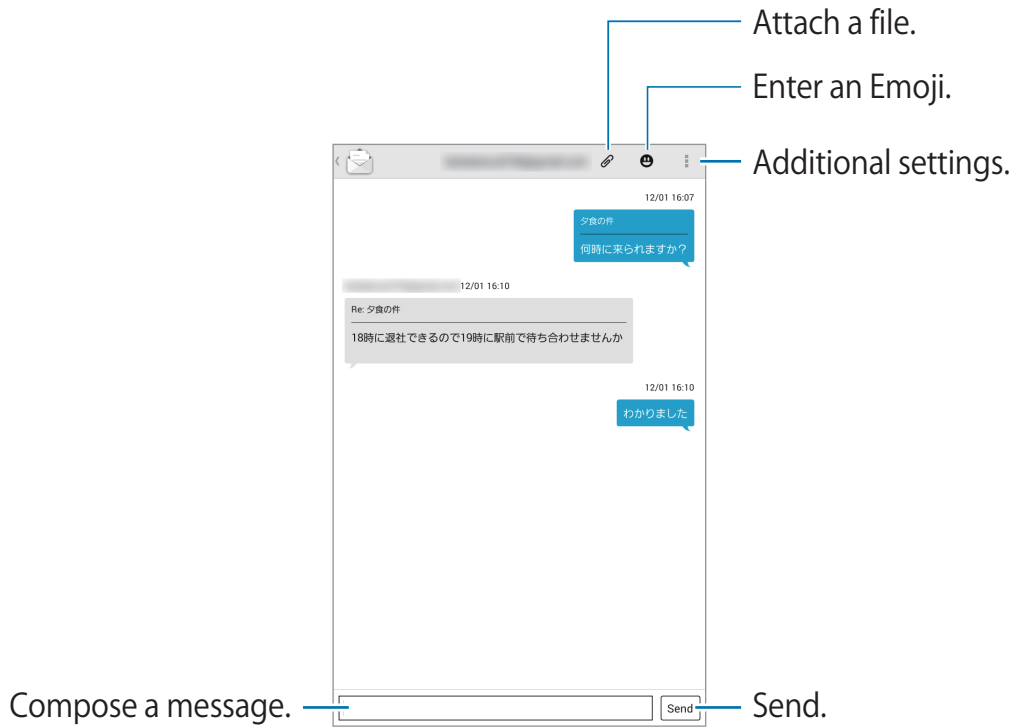
 : Add a recipient from the contacts list.

 : Attach images, videos, and others.

Reading messages

When you receive a new message, a Notification screen and Notification Indicators are displayed. Tap **Read** to read the message.

To manually download a new message, Tap **New Mail**.




Email

Use this application to send or view email messages.

Tap **Email** on the Applications list.



Setting up email accounts

Set up an email account when opening **Email** for the first time.

Enter the email address and password. Tap  for a private email account, such as Google Mail, or Tap **Manual setup** for a company email account. After that, follow the on-screen instructions to complete the setup.

To set up another email account, Tap  → **Settings** → **Add account**.

Sending messages

Tap the email account to use, and then Tap  at the top of the screen. Enter recipients, subject, and message, and then Tap .

: Add a recipient from the contacts list.


+Me: Add yourself as a recipient.

: Add more recipients.

: Attach images, videos, contacts, memos, events, and others.

: Perform various settings on the main body text.


Sending scheduled messages

While creating a message, Tap  → **Schedule sending**. Check **Schedule sending**, set a time and date, and then Tap **Done**. The device will send the message at the specified time and date.

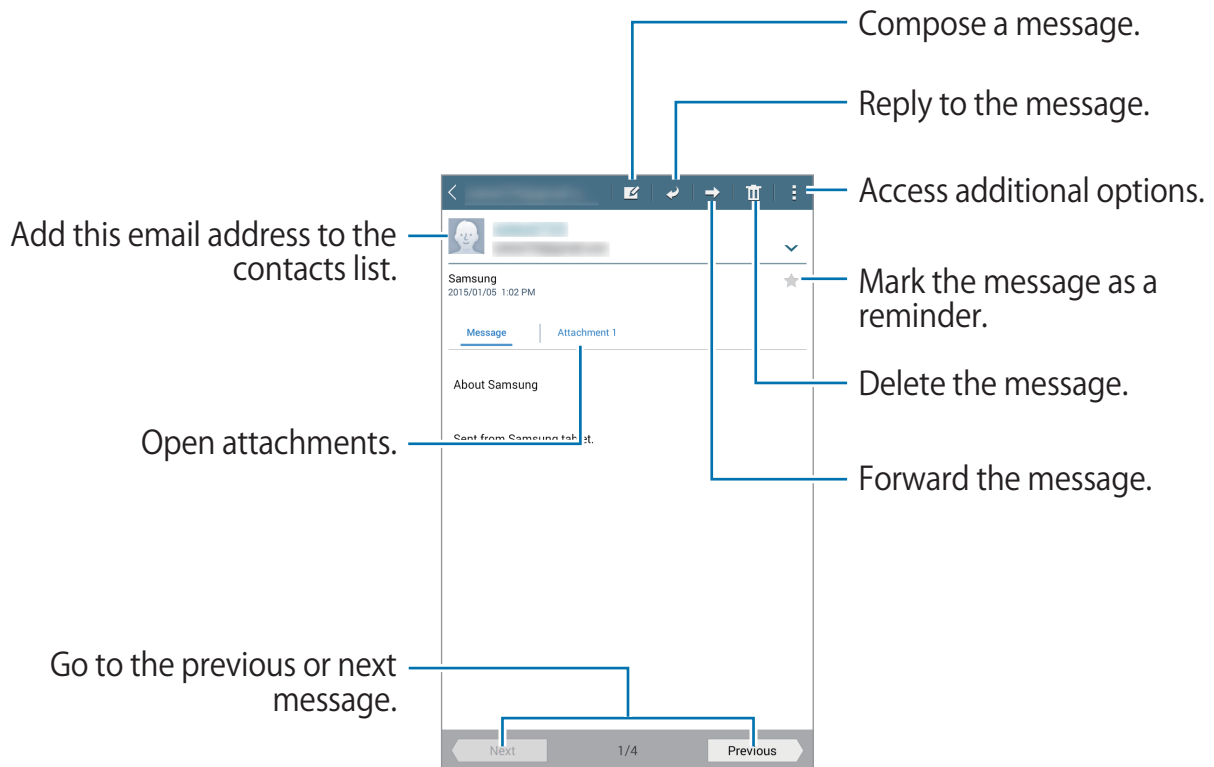


- If the device is turned off at the scheduled time, is not connected to the network, or the network is unstable, the message will not be sent.
- This feature is based on the time and date set on the device. The time and date may be incorrect if you move across time zones and the network does not update the information.

Reading messages

Select an email account to use, and new messages are downloaded. To manually download new messages, Tap  .

Tap a message to read.



Tap the Attachment tab, Tap **Preview** to open attachments. Tap **Save** to save it.

Gmail

This application is the Google email service.

Tap **Gmail** on the Applications list.

Sending messages

In any mailbox, Tap , enter recipients, a subject, and a message, and then Tap **SEND**.


Tap  → **Save draft**: Save the message for later delivery.

Tap  → **Attach file**: Attach images, videos, music, and others.

Tap  → **Insert from Drive**: Insert data from Drive.

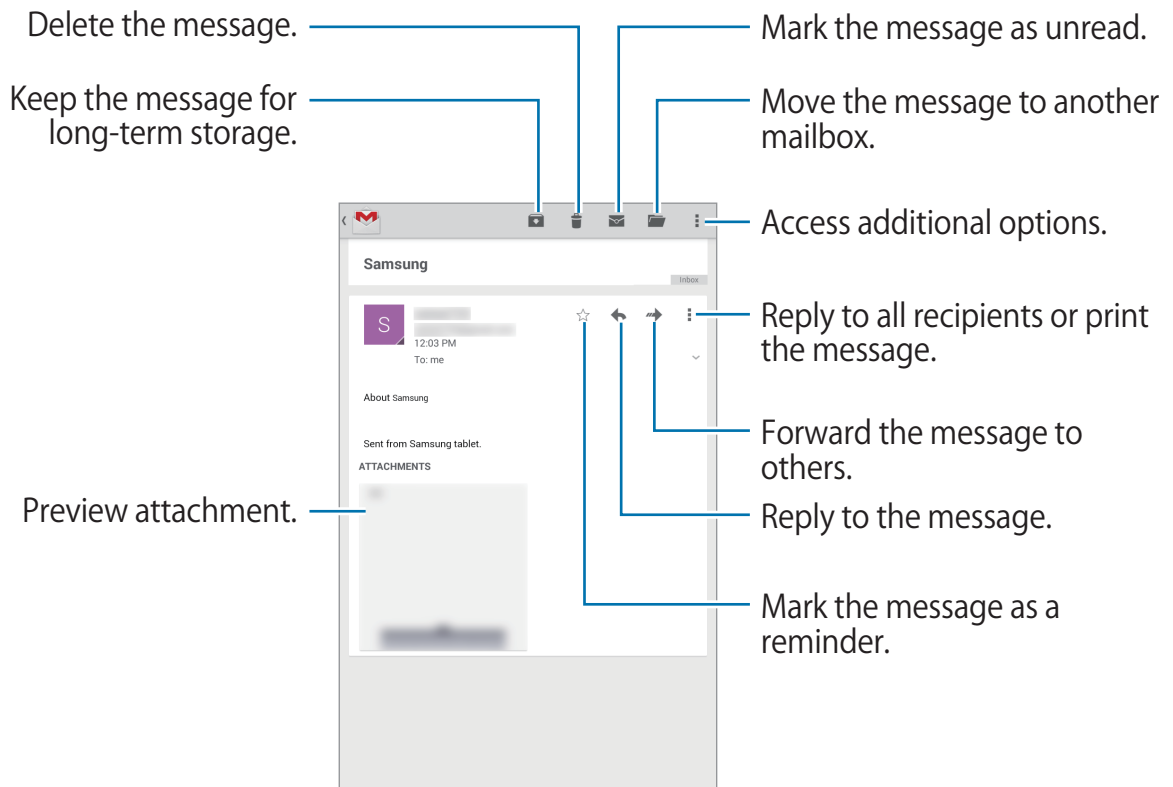
Tap  → **Discard**: Do not save message, start over.

Tap  → **Settings**: Change the Google Mail settings.

Tap  → **Send feedback**: Report your opinions for application development.

Tap  → **Help**: Access help information for the Google Mail.

Reading messages



Labels

Google Mail does not use actual folders, but uses labels instead. When Google Mail is opened, it displays messages labelled **INBOX**.

Tap  → **Refresh** to manually download new messages.

Tap  to view messages in other labels.

To add a label to a message, select the message, Tap  → **Change labels**, and then select the label to assign.

Google+

Use this application to stay connected with people via Google's social network service.


Tap **Google+** on the Applications list.

Tap **Everything** to change the category, and then scroll up or down to view posts from your circles.

Photos




Use this application to view and share images or videos via Google's social network services. Tap **Photos** on the Applications list.

Select one of the following categories:

- **ALL:** View all the images or videos that are taken or downloaded to the device.
- **HIGHLIGHTS:** View images or videos grouped by date or album. Tap  to view all of the images or videos in the group.

Then, select an image or video.

While viewing it, use one of the following icons:

- : Modify the image.
- : Share the image or video with others.
- : Delete the image or video.